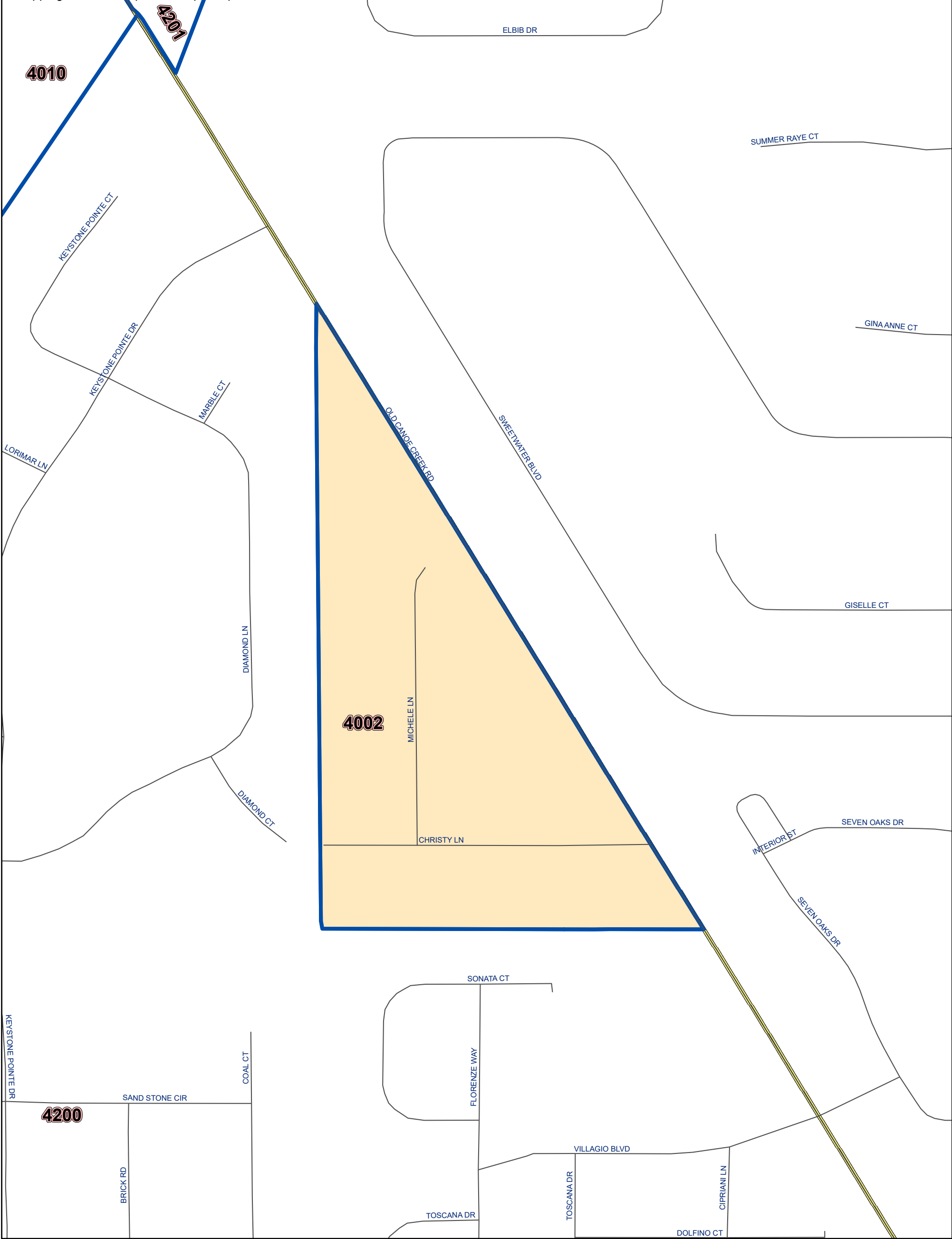


Osceola County Voting Precinct 4002

U:\Mapping GIS\GIS Map Files\Map Templates\Precincts\Precinct 4002.mxd



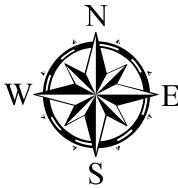
POLLING LOCATION NOT SHOWN WITHIN THE BOUNDARY OF THIS PRECINCT



MAP PRODUCED BY
THE OSCEOLA COUNTY
SUPERVISOR OF
ELECTIONS OFFICE.



Polling Location:
Cornerstone Family Church
2925 Canoe Creek Rd.
St. Cloud, FL 34772



DISCLAIMER: Precinct boundaries may not have been modified to include the latest annexations within the cities of Kissimmee and St. Cloud. Any questions as to the precinct boundaries in these areas should be directed to the Osceola County Supervisor of Elections Office.

DISCLAIMER:
The Supervisor of Elections Office and Osceola County specifically disclaims any warranty, either expressed or implied, including, but not limited to, the implied warranties of merchantability and fitness for a particular use. The entire risk as to quality and performance is with the requestor. In no event will the County or its staff be liable for any direct, indirect, incidental, special, consequential, or other damages, including loss of profit, arising out of the use of this data even if the County has been advised of the possibility of such damages. The requestor acknowledges and accepts the limitations of the Data, including the fact that the Data is dynamic and is in a constant state of maintenance, correction and update.